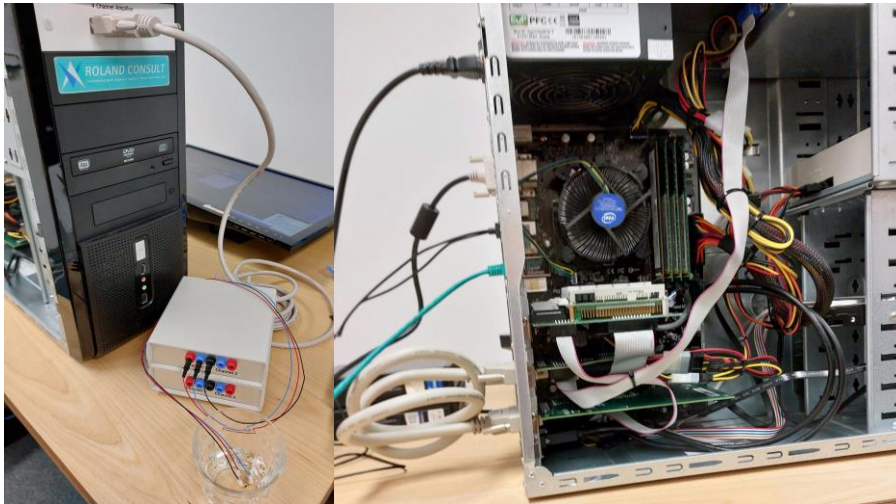
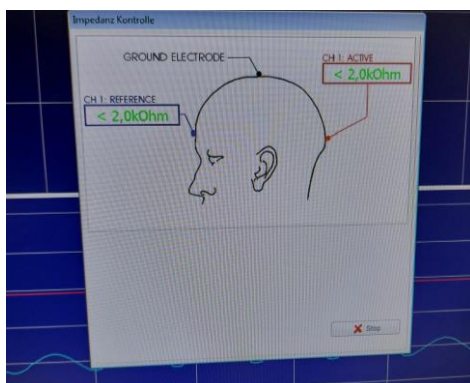


Cases for checking wrong Impedance

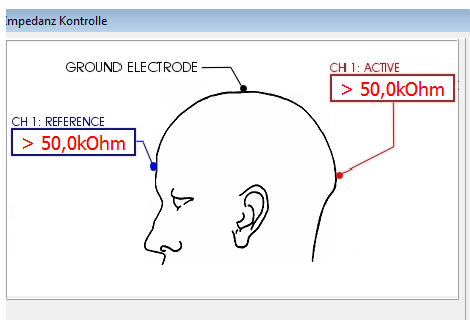
Case 01 – all good



Newer preamplifier have a “click” - sound

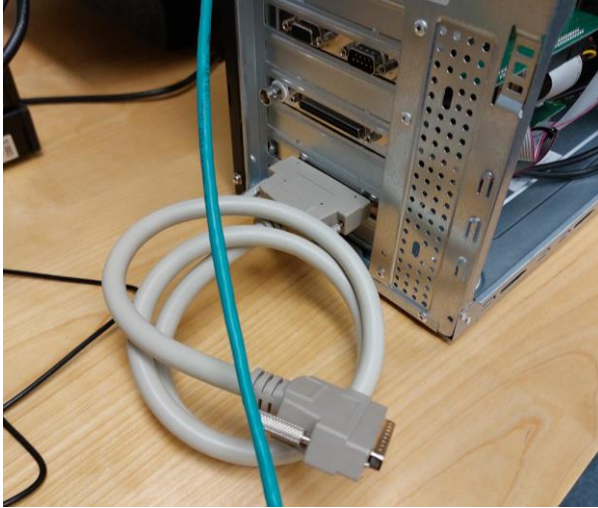


with Electrodes in Waterglas green $< 2\text{k}\Omega$



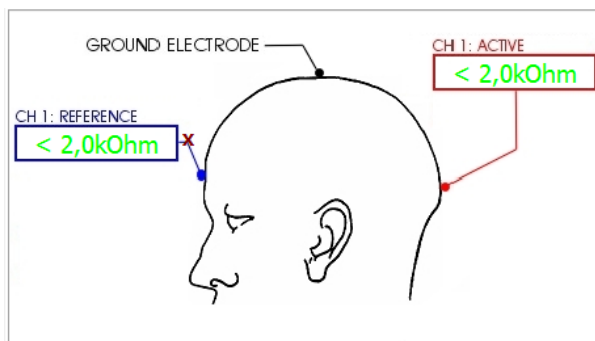
Electrodes not in Waterglas red $> 50\text{k}\Omega$

Case 02 – no connection (ADU cable) between ADU Card and VT Card

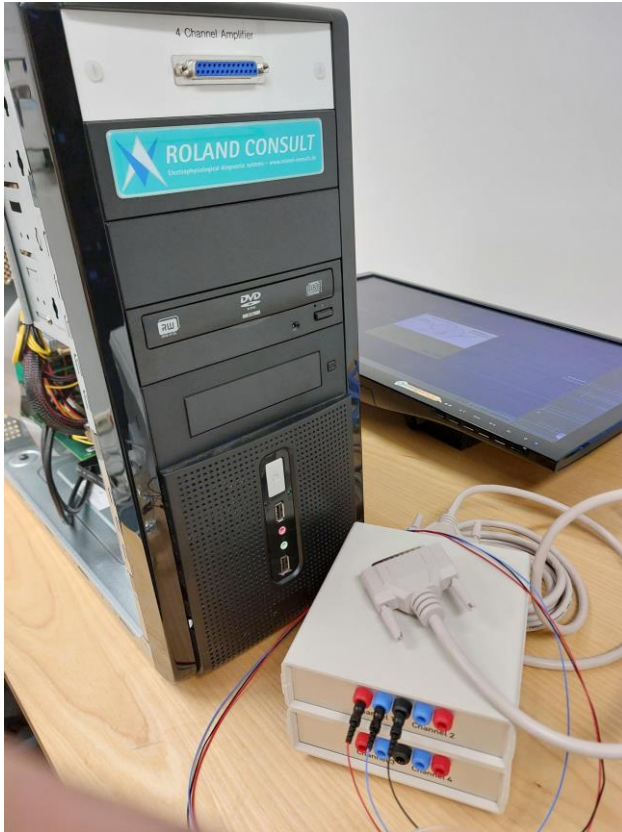


NO “click” Sound

ALWAYS $< 2 \text{ k}\Omega$

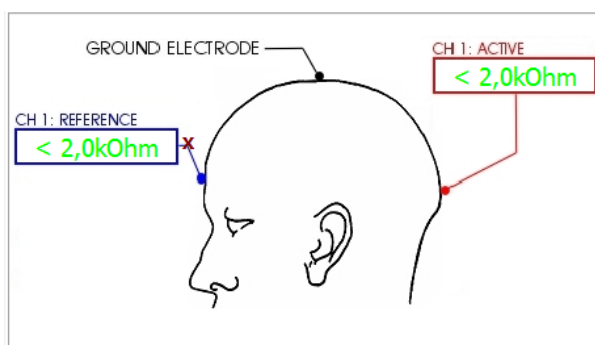


Case 03 – no connection (VT cable) between Main- and Pre- Amplifier

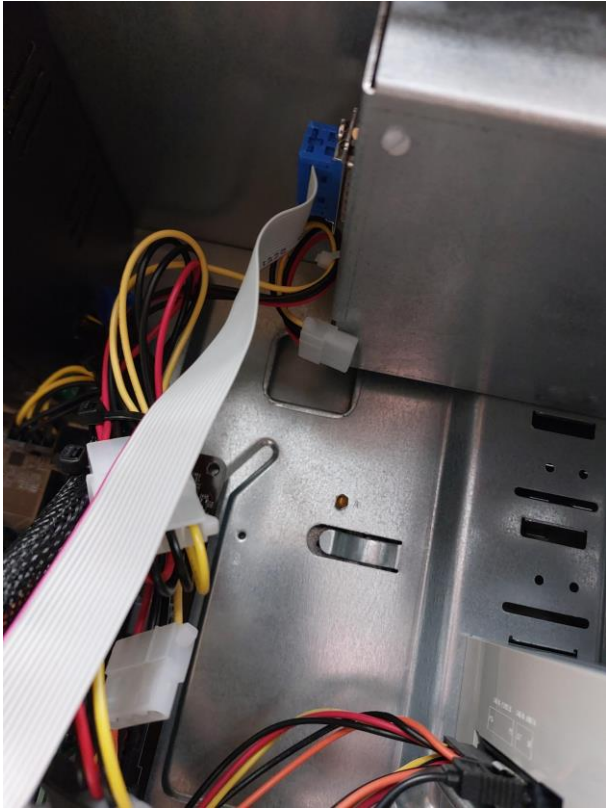


NO “click” Sound

ALWAYS $< 2\text{ k}\Omega$

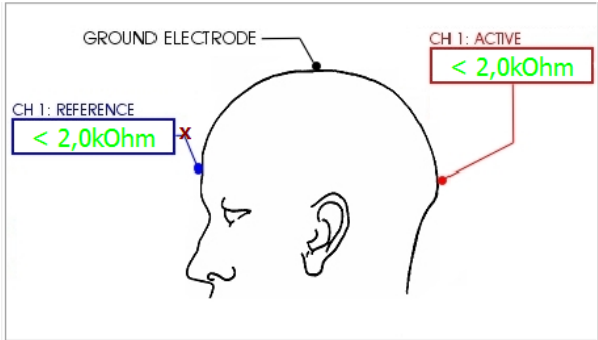


Case 04 – no power in Main- Amplifier

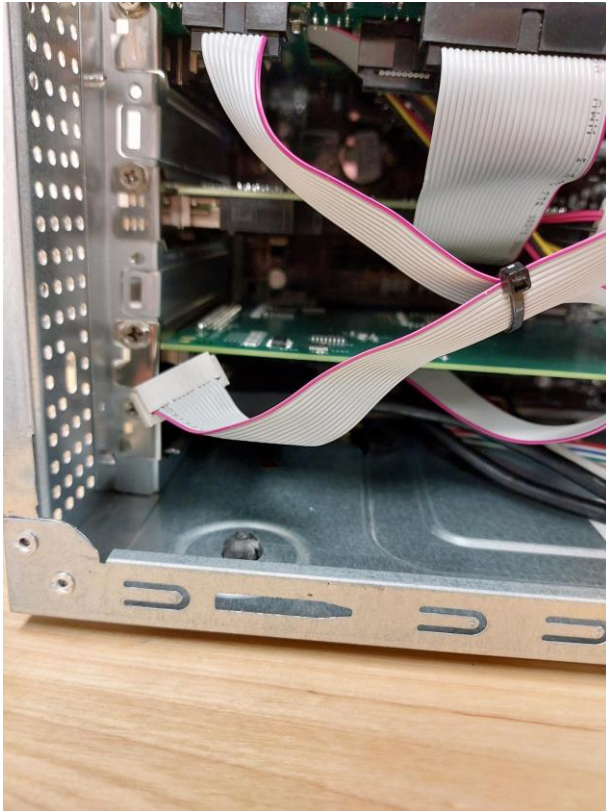


NO “click” Sound

ALWAYS < 2 kOhm



Case 05 – no connection (intern amplifier cable) between VT Card and Main- Amplifier



NO “click” Sound

ALWAYS $< 2\text{ k}\Omega$

